

Saginaw Bay Watershed Initiative Network



In the Spring of 2022, with support from a lead grant from the Saginaw Bay Watershed Initiative Network (WIN), Saginaw Bay and its river system - along with Lake Huron - will host one of the largest acoustic monitoring arrays ever assembled in the Great Lakes. With a focus on sturgeon, fish will be implanted with transmitters before they are released into four rivers in our region—Cass, Tittabawassee, Flint and Shiawassee. These fish will then be monitored as they cross the receiver network throughout the system providing researchers and restoration partners with real-time data on fish movement, habitat use and more. Because sturgeon do not reach spawning age for 15 years, this information will be important as the restoration program continues. Transmitters will also be placed in walleye to help researchers determine river usage and spawning locations of this economically important recreational fishery. The project received initial funding from WIN, and was joined by additional support from the Great Lakes Fisheries Trust (GLFT) and the Great Lakes Acoustic Telemetry Observation System (GLATOS).

December 17, 2021
Virtual Review





Saginaw Bay Watershed Initiative Network

What is WIN?

The Saginaw Bay Watershed Initiative Network (WIN) is a collaborative, community-driven quality of life initiative created by a variety of environmental, business and community interests in 1996. WIN was formed to create a more sustainable future for all who live, work and play within the Saginaw Bay watershed. One of the ways in which WIN accomplishes this objective is by providing financial support to projects that link the economic, environmental and social needs of the region.

Our Vision

As stewards of the Saginaw Bay Watershed, we value our shared, unique resources, and together we will balance economic, environmental, and social priorities to enhance the quality of life for this and future generations

Our Mission

We will cooperatively develop a shared identity for the Saginaw Bay watershed as a sustainable community. We will create opportunities to enhance understanding of sustainability, connecting people, resources, organizations and programs through regional networks of local projects.

Guiding Principles

- Provide a pleasant and healthy environment
- Conserve historic, cultural and natural resources
- Integrate economic prosperity, ecology and aesthetics
- Use land and infrastructure effectively
- Continually evaluate and refine shared vision and goals

Program Overview

WIN welcomes proposals that advance the search for sustainable solutions to current watershed and community challenges. WIN is responsive to new ideas, new research and new approaches, recognizing that such innovation is necessary to move the concept of sustainability forward in the Saginaw Bay watershed. The sustainability approach integrates economic goals with environmental and social goals and is based on the premise that meeting human needs for all people today should not impair the ability of future generations to meet their needs. A strong local economy is at the core of a sustainable community because development and the jobs it creates are the vehicles for meeting human needs.

WIN accepts proposals for projects that advance its work within five focus areas:

- Agriculture and Pollution Prevention
- Communication / Regional Marketing
- Land Use
- Water Resources
- Wildlife Stewardship

In addition to sustainability linkages, WIN evaluates projects by asking whether projects:

- Promote and encourage partnerships by leveraging resources
- Balance long-term focus with short-term results
- Promote excellence by fostering a sense of identification and pride in the watershed
- Serve as pilot or demonstration projects with broad application (can be replicated)
- Fit with WIN's vision, mission, and guiding principles

Agriculture and Pollution Prevention Objectives:

- Marketing region's agricultural products and agri-tourism
- Water quality improvement and pollution prevention including soil erosion issues

- Production of value-added, diversified agricultural products
- Preserving farming as a viable industry for the next generation of farmers
- Protection and preservation of agricultural lands
- Bridging gap between urban and rural community interests
- Promotion of alternative and improved energy sources

Communications and Regional Marketing Objectives:

- Promoting the Saginaw Bay watershed as a tourist destination and recreation area
- Education about concept of sustainability

Land Use Objectives:

- Promotion of “green” / conservation-based development
- Encouraging regional cooperation on land use issues
- Education about land use issues
- Open space protection (because of limited funds, WIN does not support land acquisition costs)

Water Resources Objectives:

- Pollution prevention (nonpoint source & point source)
- Wetland restoration
- Fisheries (improve access to, health, promotion, Fisheries Scoping Study implementation)
- Access to water resources
- Improvement of water quality leading to the de-listing of the Saginaw Bay ecosystem as an Environmental Protection Agency (EPA) Area of Concern

Wildlife Stewardship Objectives:

- Habitat restoration lakeward/riverward of the 585 foot contour
- Promotion of habitat-related events
- Providing access to significant habitat and wildlife areas
- Protection of significant habitats
- Educational projects (habitat & wildlife related)

Funding Availability and Eligibility

Please contact Saginaw Bay WIN prior to submitting an application to discuss the project and its eligibility. WIN can be reached by email at info@saginawbaywin.org or by telephone at 989-892-9171. Grant proposals are reviewed on a continual basis with financial awards made twice a year. They are no grant deadlines.

Projects are evaluated by a unique network of task groups that are central to WIN’s community-based evaluation process. Through the work of the task groups, proposals are reviewed and refined in cooperation with the applicant. The task groups are formed around WIN’s five focus areas.

If a project receives a favorable nod from a task group, it will be forwarded to WIN’s Resource Group for further consideration. Those projects that are approved by the Resource Group are presented to WIN’s Funders Network for final consideration.

Eligible organizations include nonprofit 501c(3) groups, local governments, subdivisions of local governments and educational institutions.P

Projects must take place within the Saginaw Bay Watershed

Organization Name

City of Caseville

Are you a registered Charity / 501c(3) ?

No

Do you have a Web Page ?

Yes

If yes, please submit website address: www.cityofcaseville.com

Contact E-mail

jl@cityofcaseville.com

Contact Phone number

(989) 856-2102

Contact Address 6767 Main St., P.O. Box 1049
Caseville, MI, 48725
United States

Organization Executive Officer Christopher Stahl

Project Contact Name Jamie Learman

Please state the mission/goals of your organization

The City of Caseville's mission is to put people first by ensuring our community is a safe and healthily place to live and work. We strive to promote sustainable development and active lifestyles for all.

Grant Application

Name of the Project: Riverside Park's Development and Water Trailhead Project

Is this a New or Existing Project?

Project Start Date Wednesday, June 1, 2022

Project End Date Monday, October 31, 2022

Total Funds required to complete project. 498,800

Amount Requested from Saginaw Bay WIN. 25,000

Please describe the project. How is it innovative? What need(s) does it address? Is there a relationship between this project and other programs/projects occurring in the watershed?

This particular project is pivotal. While other activities improve outdoor recreation in the .89-acre Riverside Park, this project lays a foundation for further development that will leverage the land's assets. Weave in collaborative agreements, existing underground utilities, unique location, support of the US Army COE, and the powerful commitment of the city's planners, The Riverside Park's Development and Water Trailhead Project will yield a frugally built, brilliant, outdoor recreation center. The project details are many. Install a foundational 412' sea wall along the park's river frontage, then curve it to protect the Lake Huron Access and new launches. Then construct a 400' concrete promenade and ADA/UD fishing pier. Illuminate that with non-intrusive, LED-bollard-lights. Add Green-plan-qualifying recycled material picnic tables and benches to the landscaped areas parallel to the promenade and families can picnic and view nature. Linking the promenade are UD pathways leading to two, new boat launches located at the Lake Huron Access. Securing access for all, a handicap person-lift will be installed at one of the new boat launches, becoming the FIRST such assistive technology on Lake Huron's-sunset-side. Joining in, the Harbor Commission resolved collaboration to operate the new launches in perpetuity. The project's regional implication derives from the new ADA/UD kayak launch, with its coordinates widely published. The launch when combined with the Park's amenities creates an essential ADA Trailhead for Michigan's 139-mile Tip of the Thumb Heritage Water Trail. Native plants will be introduced to the site and swales will guide water runoff from the gradually sloping land. In-park, UD pathways will connect entrances to ADA parking and recreational areas. Way and acknowledgement signage work to show visitors around the park, and how to reach it from M-25 and Main Street. Landscaping, parking lot resurfacing, striping, and general site preparation are part of this project. With the support of Saginaw Bay WIN, The Riverside Park will emerge as a unique, beautiful, and relevant outdoor recreation facility advancing Saginaw Bay WIN's goals.

WIN's key focus area is sustainability - that relationship between the economy, the environment and our communities. Please discuss the sustainability linkages in the project.

The strategically located Riverside Park provides natural resource access to Lake Huron. With this remarkable parcel of land brought into the public trust in 2020, the community increased its role as protector of natural resources, while adding outdoor recreational opportunities. Increasing the number of users through improved access to outdoor recreational opportunities, we increase the number of defenders of Michigan's natural resources. The park's land connects its waterway access to the 139-mile Tip of the Thumb Water trail, a Michigan Coastal Water Trail. With the development of the site, The Riverside Park will be designated as an ADA/UD Trailhead. The trail's extension gives kayakers not only a choice of launches, but also a choice of destinations to scenic wetlands, or upriver environments, or through the access link to Lake Huron's coast and rare public beaches. In addition, this development project adds ADA/UD shore fishing, in short supply throughout the Thumb of Michigan. Development will create natural gathering places for families picnicking and relaxing. To build a broadly-held belief in the sustainability of this natural resource, the planners will draw people in with year around recreational activities.

Describe how the project fits with WIN's Vision, Mission and Guiding Principles.

This project shares Saginaw's Bay WIN's vision in that it builds upon the unique resource of the park's place in the Saginaw Bay Watershed. At the confluence of the Pigeon River and Saginaw Bay lies this park. Through the project, handicapped accessible kayaking, fishing and nature viewing will be added in ways that will enhance the quality of life for this and future generations. This project is connecting people and groups in the region to create opportunities and understanding of the watershed.

What tangible results do you expect from the project and how will you measure them?

The Saginaw Bay Watershed will be recognized in park kiosks as a contributor to the expanded recreational opportunities. Other kiosk content will cover sustainability. Benches and tables will be made of recycled materials. Bio swales will be integrated into the park. Informational kiosks will contain information throughout the park. Visitors may be interviewed for results. Improved access to the watershed will be measured by the number of users. The Lake Huron fisheries will be part of the kiosks. Additional water trail access is expected to attract more people and will be monitored by the city and municipal marina workers.

How do you plan to communicate the project with the public or your intended audience?

The project will be announced and during buildout the public will be given progress updates and informed about the accessible design components of the project. Press releases, along with photographs of the progress will go out. The city also has a large following on the city's Facebook(Meta) page. This page will be used throughout the project to both promote it and inform about it.

Do you intend to cooperate with other agencies or non-profit organizations on this specific project? If not, why not?

This extraordinary Riverside Park project was made possible through a partnership between the City of Caseville and the Michigan Natural Resources Trust Fund Acquisition Grant Program. This remarkable cooperation secured the land in perpetuity, and so it guaranteed the public's access to superior natural resources. The land's Pigeon River and Lake Huron Access water frontage create access to Lake Huron, wetlands, coastal beaches, and upriver environments. The area is overflowed by two great American Flyways and observers can view the fall and spring migrations of dozens of species of birds. Audubon has designated the area as a birding hot spot. Once developed, again with the assistance of a Michigan Natural Resources Trust Fund development grant, the .89-acre Riverside Park will provide assistive technology to handicapped citizens through the first, assistive-recreational boat launch on the sunset side of Lake Huron. The MNRTF has recommended this \$498,800 project for funding by committing \$298,800 of its funds towards the project. The strategically located park will also host the new, accessible ADA/UD Kayak Trailhead along the Tip of the Thumb Heritage Water Trail. Responding to the vision of its citizens, city leaders moved to commit matching funds to realize this project. In

addition, they struck a binding agreement with the Grant-in-Aid, Harbor Commission to leverage investment in the development of the launch area. The City of Caseville offers its parks at no-charge.

What specific items would be covered by a grant from the Saginaw Bay WIN program?

Boat launch and handicapped lift.

How do you propose to recognize a grant from the Saginaw Bay WIN program?

Press releases and recognition during progress updates to the public.

Project Success. What does success look like for your project? How will you determine whether the project has been successful?

Economic goals: This Riverside Park Development Project will draw tourists to the park area. The introduction of a handicapped accessible fishing pier will be magnetic. Accessible parking will solve many problems for visitors. Adding a second handicapped accessible kayak launch to the city will draw many people. The local businesses will benefit from the increased tourism. And from the long view, a kiosk will contain information on careers in wildlife management, perhaps engaging the next generation in the productive and protective use of the great natural gifts of the Saginaw Basin.

Community or Social Goals: City of Caseville planners surveyed year-around and summer residents. The findings are clear: there is a need to provide handicapped accessible outdoor activities including fishing and nature viewing.

And what few realize, despite Caseville’s closeness to the water, the majority of residents live in land-locked neighborhoods. Adding another accessible park to our arsenal will benefit all.

Environmental Goals: The installation of 400 feet of seawall will stop erosion of the Pigeon River’s edge. Bio-swales will control snow-melt and rain runoff, while offering the benefits of landscaping with native species. The educational component of the project is best supported by the words of the Father of Ecology, Aldo Leopold, “We cannot conserve what we do not know exists.”

Saginaw Bay WIN Grant Project Budget

Personnel Expenses 0

Please Describe Personnel Expenses

The city is not going to charge for personnel used on this project.

Materials / Supplies Expenses 498,800

Please Describe Materials / Supplies Expenses

All contractor labor and supplies included here.

Equipment Expenses 0

Please Describe Equipment Expenses

Contractor equipment included in their bids. The city will not charge for its equipment use.

Communication / Marketing Expenses 0

Please Describe Communication / Marketing Expenses

The city will use all free sources for communication and marketing.

Other Expenses 0

Please Describe Other Expenses

N/A

Total Project Expenditures (including proposed WIN grant) 498,800

Please Describe Amounts Already Raised for the Project and Sources

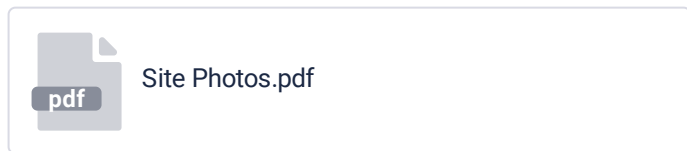
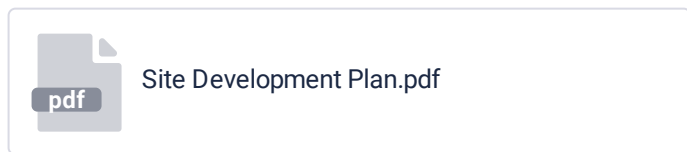
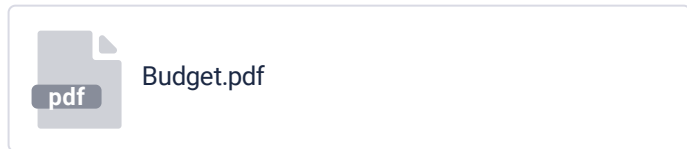
The city has a commitment of \$298,000 from the Michigan Natural Resources Trust Fund (Commitment of funding anticipated from the legislature in early 2022) Without this funding the project is not feasible. The City has committed to the remaining funds needed from our General Operating fund.

What is your time frame to obtain the total funding required if you do not have it already? Spring 2022

Grant Application Submit

The information provided by applicants in this form shall not be shared outside of the applicant's organization and contacts and directors , committee members and other participants in the Saginaw Bay WIN program. Public information will only be released if the grant application has been accepted and approved by the Saginaw Bay WIN program.

Attachments. Please upload any materials that help describe your organization or project (ex. annual report, marketing materials, project budget etc)



Name Jamie Learman

Email jl@cityofcaseville.com

Address 6767 Main St., P.O. Box 1049
Caseville, Michigan, 48725

I agree that the information herein are true and correct

Date & Time of application. Monday, December 6, 2021 11:40

Type a question
Thanks for the opportunity!

Section C2: Project Details

Development Applications ONLY

*Applicant's current control of the site:

- ✓ Fee Simple
- Lease
- Easement
- Other (describe)

*Age of Park 1 Years

*Acres .89

Project Cost Estimate Table

<u>SCOPE ITEM</u>	<u>DNR ONLY</u> <u>Accessibility Guidelines</u>	<u>QUANTITY</u>	<u>TOTAL ESTIMATED</u> <u>COST</u>
Fishing Pier or Dock		1	\$81,000.00
Seawall or Shoreline Stabilization		1	\$200,000.00
Boating Launch or Ramp		2	\$88,000.00
Access Pathway 6' wide or more		1	\$18,000.00
Canoe/Kayak Launch or Ramp		1	\$27,500.00
Lighting		12	\$18,200.00
Landscaping		1	\$35,200.00
Bench(es)		2	\$1,800.00
Picnic Table(s)		2	\$2,400.00

(New rows will appear as rows are completed and Saved)

Other: Handicap Lift	1	\$15,000.00
----------------------	---	-------------

Do not list the aspects of project execution, such as labor, construction equipment, contingency or raw materials. (New rows will appear as rows are completed and Saved)

	Permit Fees	\$1,100.00
	MNRTF Sign	\$600.00
	Subtotal	\$488,800.00
Engineering (These fees may not exceed 15% of subtotal)		\$10,000.00

Total Estimated Cost (Must equal Total Project Cost amount on Section B page.) **\$498,800.00**

ESSENTIAL PATHWAYS
ARE U.D. PRINCIPLE WIDTHS

ALL WAY SURFACES MEET OR
EXCEED A.D.A. REQUIREMENTS

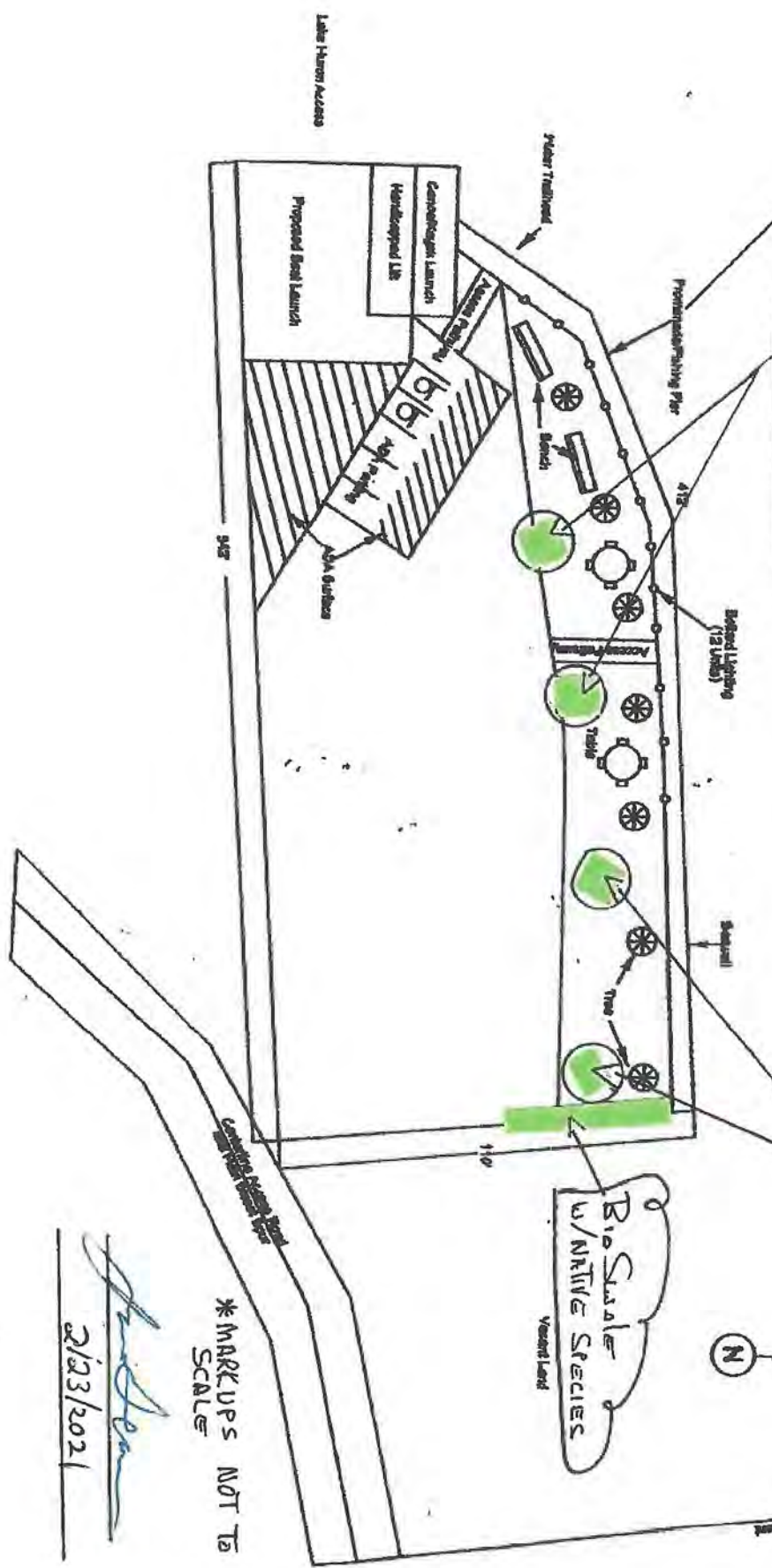
ROMANADE / FISHING DECK WIDTHS
WILL VARY BETWEEN
7 FEET AND 10 FEET
BY AREA / FUNCTION

RAIN GARDEN
w/ NATIVE PLANTINGS

Michigan Natural Resource Trust Fund Grant Application
Site Development Plan
TR 21-0112
The Riverside Park's Development and
Water Trailhead Project

RAIN SWALE
w/ NATIVE PLANTINGS

BIO SWALE
w/ NATIVE SPECIES



*MARKUPS NOT TO
SCALE

L. ...
2/23/2021

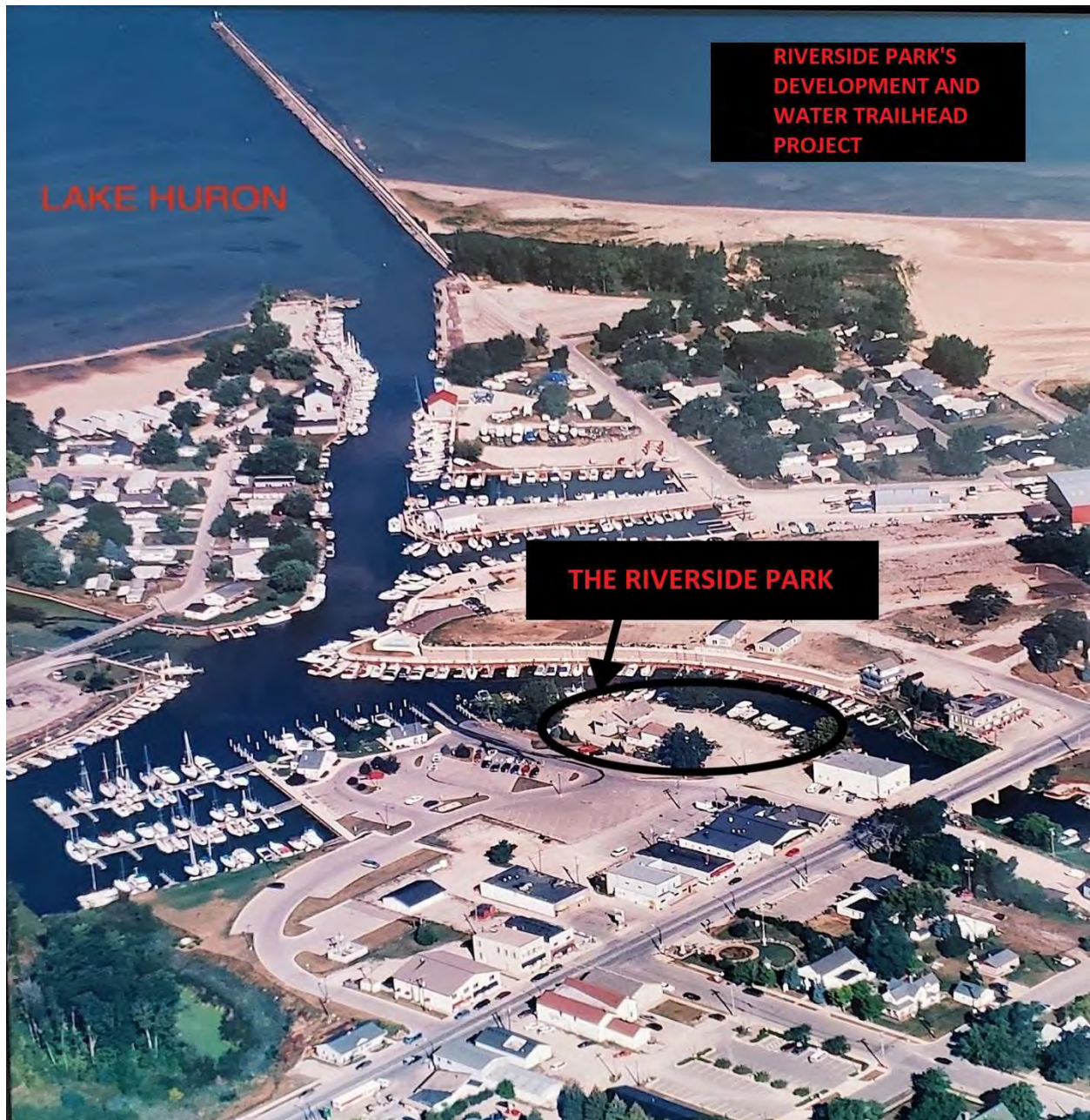


PHOTO 1: THE BIG PICTURE: The greater Caseville harbor is host to one municipal and three private marinas. Nearly 500 slips are available for seasonal and transient rental. Cirled in the photograph above, and protected within the harbor, is the Riverside Park. The Riverside Park is a walkable 200 feet from Main Street and M-25. Its unique position opens watercraft access to Lake Huron, water trails, wetlands, and up-river environments. It is the subject of the park is the site of the *Development and Water Trailhead Project*. The City of Caseville is asking the MNRTF to help fund the development of this amazing natural resource. (Undated aerial photograph, located in the Caseville City Office.)



PHOTO 2: THE OVERHEAD VIEW: This drone photograph was taking directly above The Riverside Park, before any development. The frozen-over Pigeon River runs along the north side of the property. On the photograph's far left, the land curves to face westly towards Lake Huron. To the east of the park is a small vacant lot. At the bottom of the photograph, following the contour of the park, a road connects to M-25 on the far right. The stored boats have been returned to owners, and the shed was relocated. Some of the portable docks, seen notching the river's edge, will be used during the summer seasons for boating. The Hill Residence will be repurposed in the future. (2/2020)



PHOTO 3: FISHING PIER, PROMENADE AND PICNIC AREAS The drone's camera faced south-east for this photograph. Four-hundred and twelve feet of steel sea wall will support the creation of a concrete promenade and shore fishing pier. LED bollard-style lighting along the promenade will be consistent with the landscaped, minimizing light pollution, and supporting longer use of the picnic areas around the park's UD pathways. (2/2020)



PHOTO 4: ON PARKING: New ADA parking spaces will be added. Well-marked pathways will lead from parking lots to fishing pier, promenade, picnic areas, boat launches, and other parts of this .89-acre park. Vehicles will use established roads to reach and leave the Riverside Park. (2/2020)



PHOTO 5: THE HILL RESIDENCE: Although not part of the project proposal, the building is seen in each drone photograph. The building will undergo repurposing, in the future. (2/2020)



PHOTO 6: ADA TRAILHEAD AND ASSISTIVE BOAT LAUNCH: Flying directly east, the drone captures the site of the *Trailhead* for the 139-mile *Tip of the Thumb Heritage Water Trail*, Michigan's longest trail. An ADA/UD Kayak launch will be installed to the far left of the tree line at water's edge. The row of non-native trees to the right of the center will be thinned out, making space for two new boat launches. The launches will be placed in the Park, adjacent to the two, overworked Harbor Commission launches, seen as a clearing in the photograph's far right. One of the City's launches will be kitted out with ADA technology to assist wheelchair bound citizens in boarding and disembarking boats. If the project is funded, the lift will be the *first available on the sunrise side of Lake Huron*. (2/2020)

Drone photographs by Jamie Learman



Saginaw Bay Watershed Initiative Network

What is WIN?

The Saginaw Bay Watershed Initiative Network (WIN) is a collaborative, community-driven quality of life initiative created by a variety of environmental, business and community interests in 1996. WIN was formed to create a more sustainable future for all who live, work and play within the Saginaw Bay watershed. One of the ways in which WIN accomplishes this objective is by providing financial support to projects that link the economic, environmental and social needs of the region.

Our Vision

As stewards of the Saginaw Bay Watershed, we value our shared, unique resources, and together we will balance economic, environmental, and social priorities to enhance the quality of life for this and future generations

Our Mission

We will cooperatively develop a shared identity for the Saginaw Bay watershed as a sustainable community. We will create opportunities to enhance understanding of sustainability, connecting people, resources, organizations and programs through regional networks of local projects.

Guiding Principles

- Provide a pleasant and healthy environment
- Conserve historic, cultural and natural resources
- Integrate economic prosperity, ecology and aesthetics
- Use land and infrastructure effectively
- Continually evaluate and refine shared vision and goals

Program Overview

WIN welcomes proposals that advance the search for sustainable solutions to current watershed and community challenges. WIN is responsive to new ideas, new research and new approaches, recognizing that such innovation is necessary to move the concept of sustainability forward in the Saginaw Bay watershed. The sustainability approach integrates economic goals with environmental and social goals and is based on the premise that meeting human needs for all people today should not impair the ability of future generations to meet their needs. A strong local economy is at the core of a sustainable community because development and the jobs it creates are the vehicles for meeting human needs.

WIN accepts proposals for projects that advance its work within five focus areas:

- Agriculture and Pollution Prevention
- Communication / Regional Marketing
- Land Use
- Water Resources
- Wildlife Stewardship

In addition to sustainability linkages, WIN evaluates projects by asking whether projects:

- Promote and encourage partnerships by leveraging resources
- Balance long-term focus with short-term results
- Promote excellence by fostering a sense of identification and pride in the watershed
- Serve as pilot or demonstration projects with broad application (can be replicated)
- Fit with WIN's vision, mission, and guiding principles

Agriculture and Pollution Prevention Objectives:

- Marketing region's agricultural products and agri-tourism
- Water quality improvement and pollution prevention including soil erosion issues

- Production of value-added, diversified agricultural products
- Preserving farming as a viable industry for the next generation of farmers
- Protection and preservation of agricultural lands
- Bridging gap between urban and rural community interests
- Promotion of alternative and improved energy sources

Communications and Regional Marketing Objectives:

- Promoting the Saginaw Bay watershed as a tourist destination and recreation area
- Education about concept of sustainability

Land Use Objectives:

- Promotion of “green” / conservation-based development
- Encouraging regional cooperation on land use issues
- Education about land use issues
- Open space protection (because of limited funds, WIN does not support land acquisition costs)

Water Resources Objectives:

- Pollution prevention (nonpoint source & point source)
- Wetland restoration
- Fisheries (improve access to, health, promotion, Fisheries Scoping Study implementation)
- Access to water resources
- Improvement of water quality leading to the de-listing of the Saginaw Bay ecosystem as an Environmental Protection Agency (EPA) Area of Concern

Wildlife Stewardship Objectives:

- Habitat restoration lakeward/riverward of the 585 foot contour
- Promotion of habitat-related events
- Providing access to significant habitat and wildlife areas
- Protection of significant habitats
- Educational projects (habitat & wildlife related)

Funding Availability and Eligibility

Please contact Saginaw Bay WIN prior to submitting an application to discuss the project and its eligibility. WIN can be reached by email at info@saginawbaywin.org or by telephone at 989-892-9171. Grant proposals are reviewed on a continual basis with financial awards made twice a year. They are no grant deadlines.

Projects are evaluated by a unique network of task groups that are central to WIN’s community-based evaluation process. Through the work of the task groups, proposals are reviewed and refined in cooperation with the applicant. The task groups are formed around WIN’s five focus areas.

If a project receives a favorable nod from a task group, it will be forwarded to WIN’s Resource Group for further consideration. Those projects that are approved by the Resource Group are presented to WIN’s Funders Network for final consideration.

Eligible organizations include nonprofit 501c(3) groups, local governments, subdivisions of local governments and educational institutions.P

Projects must take place within the Saginaw Bay Watershed

Organization Name Chippewa Nature Center, Inc.

Are you a registered Charity / 501c(3) ?

If Yes to above , please provide Your Charitable Number 381859315

Do you have a Web Page ?

If yes, please submit website address: www.chippewanaturecenter.org

Contact E-mail dpilaske@chippewanaturecenter.org

Contact Phone number (989) 631-0830

Contact Address 400 S. Badour Rd., Rt. 9
Midland, MI, 48640
United States

Organization Executive Officer Dennis Pilaske

Project Contact Name Dennis Pilaske

Please state the mission/goals of your organization

Our mission is to connect all people with nature through educational, recreational and cultural experiences.

Grant Application

Name of the Project: Chippewa Nature Center: Land Restoration and Recovery

Is this a New or Existing Project? Existing

Project Start Date Monday, January 10, 2022

Project End Date Wednesday, November 30, 2022

Total Funds required to complete project. 57,700

Amount Requested from Saginaw Bay WIN. 14,975

Please describe the project. How is it innovative? What need(s) does it address? Is there a relationship between this project and other programs/projects occurring in the watershed?

Chippewa Nature Center (CNC) is found in a key location within the Saginaw Bay Watershed at the confluence of the Chippewa and Pine Rivers. CNC’s land management goal is to continue to restore its 1,500 acres of land that historically has been disturbed by farming, gravel mining, industry and invasive species into a healthier state. Funding from this grant will be in addition to a larger restoration effort being completed on CNC’s land made possible by a 2022/2023 MDNR habitat grant.

A forestry mower will be utilized to control large monocultures of invasive plants while at the same time creating wildlife clearings and areas where native trees and shrubs can be restored. The forestry mowing provided from this grant will focus primarily on wooded wetlands that have been taken over by buckthorn. Species such as reptiles, amphibians, wood ducks and many other species of birds that have been impacted by buckthorn will be positively influenced by this management practice. The addition of wood duck boxes and bat houses to these areas and monitoring of turtle species will be specific methods that CNC will employ to not only help these species, but will also serve as a strategic method to further educate the public about this restoration project.

Prescribed burns in a diversity of open areas as well as an oak savannah will further provide examples of how CNC enhances its ecosystems. Many songbird and pollinator species, amphibians and reptiles will benefit from the results of these burns. The addition of interpretive signage and “snake boards” in these areas will further provide monitoring and programming opportunities.

Individual as well as groups of volunteers from local organizations will be engaged to help implement these grant projects. Volunteer projects include planting and caging trees and shrubs, assisting in the installation and monitoring of wood duck boxes, bat houses, and snake boards as well as trapping and monitoring turtles that will be marked with Passive Integrated Transponder (PIT) tags. This project connects people to nature by using management practices that help foster healthier ecosystems for people to enjoy while at the same time providing very strategic and engaging educational opportunities for people to learn about the natural world.

WIN's key focus area is sustainability - that relationship between the economy, the environment and our communities. Please discuss the sustainability linkages in the project.

Chippewa Nature Center has been an integral part of the Saginaw Bay Watershed sustainability for over 55 years. Education, land restoration and management have been key elements of its vision to inspire people to be stewards of the natural world. As CNC has continued to be a good steward of the land and provide a diversity of engaging environmental programs, tens of thousands of people come to visit the site each year and support the local economy through their travels. CNC also intends to use contractors within a 100-mile radius to complete the forestry mowing and prescribed burns requested in this grant to also help local businesses.

Describe how the project fits with WIN's Vision, Mission and Guiding Principles.

Chippewa Nature Center's land management goal is to produce and maintain ecosystems that are healthy and diverse. By completing the projects in this grant proposal, CNC will be restoring key areas important to the Saginaw Bay region, aligning with WIN's goals to improve wildlife stewardship and protect its water resources. These projects will be strongly tied to the education of our natural resources as numerous programming opportunities will be offered. Partnering with other funding agencies, as well as working with volunteers from organizations and as individuals, will be a key component of this project. Various methods of interpretation of prescribed burns, forestry mowing, invasive control, native tree and shrub planting, wood duck boxes, bat houses, and snake boards will all be good examples of how the community will engage with the project. Healthier land that has a diversity of native species along with the programming that is supported by WIN in this project will continue to attract people from around the region, supporting the local economy.

What tangible results do you expect from the project and how will you measure them?

Historically, the Saginaw Bay area lost significant wetlands to drainage and urbanization. Now, the quality of the remaining wooded wetlands has decreased due to the encroachment of invasive species like buckthorn. This project will help restore some of the wooded wetlands at CNC by removing buckthorn and opening up some of the understory of these sites for wildlife to use once again. Some sites will be replanted with native trees and shrubs associated with wooded wetlands. In addition to interpreting the forestry mowing and the invasive species management at these sites, education of key species that use wooded wetlands will be an extra draw to the programming. One example will be the trapping and tagging of Blanding's turtle, a species of special concern in Michigan. Blanding's turtles are an example of a species that use these wooded wetlands during the mating season. Through tagging, CNC will be able to better understand the number of Blanding's turtles on the property and how and where they move across the landscape. We expect the public to be engaged with this educational component to the project as many people will be interested in participating in volunteering with monitoring, attending programs, and viewing social media communication.

Grassland species within the Saginaw Bay area have been documented to be in sharp decline. By maintaining and increasing diversity of key open areas through the use of prescribed burns at CNC, species will benefit. Adding snake boards that can be checked during programs, leading bird hikes, and discussing the importance of prescribed burns to maintaining open areas are all examples of the educational programs that can take place as a result of this project.

Volunteers who work on the project, participants who attend programming and people viewing updates and educational information about the project on social media and newsletter articles will be

challenged to be a better steward of the environment.

How do you plan to communicate the project with the public or your intended audience?

This project will provide important opportunities for volunteers to be involved and grow as stewards of the environment. On-site interpretive programming and signage, newsletter articles on the project, and social media posts will aid in reaching a diversity of participants. CNC also has a well-established marketing plan that promotes programs and projects through multiple media outlets.

Do you intend to cooperate with other agencies or non-profit organizations on this specific project? If not, why not?

Yes, this project enhances the 2022/2023 MDNR Habitat grant, which has provided a firm foundation of funding to make land improvements at CNC. In addition, the USFWS has provided wildflower seed for additional plantings in 2022. CNC will also engage with volunteers in agencies like Dow, Rotary Clubs, and the Children's Grief Network to carry out land restoration and monitoring taking place as a result of these grants.

What specific items would be covered by a grant from the Saginaw Bay WIN program?

A contractor will be hired to complete prescribed burns in several locations of CNC grasslands and one oak savannah. Forestry mowing will remove invasive plant species to create wildlife clearings and areas that can be replanted with native trees and shrubs also purchased by the grant. Turtle traps, tagging supplies, wood for wood duck boxes, snake boards and bat houses will be purchased to help some key wildlife that use wooded wetlands and to strategically tie in an educational component to the project.

How do you propose to recognize a grant from the Saginaw Bay WIN program?

The Saginaw Bay WIN program will be recognized via press release, recognition in CNC quarterly newsletter, and annual report.

Project Success. What does success look like for your project? How will you determine whether the project has been successful?

Once the full project is complete, over 15 acres will be forestry mowed to control invasive plants as well as open up areas for wildlife. An additional 17 acres of open area will be managed through a prescribed burn to maintain grasslands and increase diversity, and over 14 acres of CNC's fields will be planted with native wildflowers and grasses. Approximately 400 trees will be planted and caged. Eight wood duck boxes, 8 bat houses and 24 snake boards will be assembled by volunteers and installed in the areas restored at CNC. In addition, numerous Blanding's turtles, as well as some other turtle species (100 turtles will be tagged total), will be trapped and tagged.

Success will also be measured by the recruitment of both individual and group volunteers that get involved in the project and by people who attend programs or who respond to social media posts. Interpretive signs at the project sites and newsletter articles will share important stewardship messages, positively impacting individuals throughout the Saginaw Bay Watershed.

Saginaw Bay WIN Grant Project Budget

Personnel Expenses 34875

Please Describe Personnel Expenses

These fees cover the cost of contracted services for the prescribed burns and forestry mowing.

\$6,875 Prescribed Burn

\$28,000 Forestry Mowing

Materials / Supplies Expenses 22,375

Please Describe Materials / Supplies Expenses

16,075 Trees, shrubs, and pollinator plant seed
2350 Turtle traps, tags and code reader
3000 Tree caging
500 Herbicide
450 Supplies for wood duck boxes, bat houses and snake boards

Equipment Expenses 0

Communication / Marketing Expenses 0

Other Expenses 0

Total Project Expenditures (including proposed WIN grant) 57,700

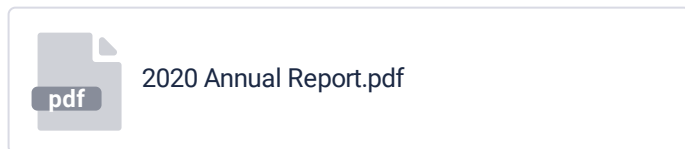
Please Describe Amounts Already Raised for the Project and Sources

\$42,725 DNR habitat grant

Grant Application Submit

The information provided by applicants in this form shall not be shared outside of the applicant's organization and contacts and directors, committee members and other participants in the Saginaw Bay WIN program. Public information will only be released if the grant application has been accepted and approved by the Saginaw Bay WIN program.

Attachments. Please upload any materials that help describe your organization or project (ex. annual report, marketing materials, project budget etc)



Name Dennis Pilaske

Email dpilaske@chippewanaturecenter.org

Address 400 South Badour Road
Midland, MI, 48640

I agree that the information herein are true and correct

Yes

Date & Time of application. Tuesday, December 7, 2021 10:50



Saginaw Bay Watershed Initiative Network

What is WIN?

The Saginaw Bay Watershed Initiative Network (WIN) is a collaborative, community-driven quality of life initiative created by a variety of environmental, business and community interests in 1996. WIN was formed to create a more sustainable future for all who live, work and play within the Saginaw Bay watershed. One of the ways in which WIN accomplishes this objective is by providing financial support to projects that link the economic, environmental and social needs of the region.

Our Vision

As stewards of the Saginaw Bay Watershed, we value our shared, unique resources, and together we will balance economic, environmental, and social priorities to enhance the quality of life for this and future generations

Our Mission

We will cooperatively develop a shared identity for the Saginaw Bay watershed as a sustainable community. We will create opportunities to enhance understanding of sustainability, connecting people, resources, organizations and programs through regional networks of local projects.

Guiding Principles

- Provide a pleasant and healthy environment
- Conserve historic, cultural and natural resources
- Integrate economic prosperity, ecology and aesthetics
- Use land and infrastructure effectively
- Continually evaluate and refine shared vision and goals

Program Overview

WIN welcomes proposals that advance the search for sustainable solutions to current watershed and community challenges. WIN is responsive to new ideas, new research and new approaches, recognizing that such innovation is necessary to move the concept of sustainability forward in the Saginaw Bay watershed. The sustainability approach integrates economic goals with environmental and social goals and is based on the premise that meeting human needs for all people today should not impair the ability of future generations to meet their needs. A strong local economy is at the core of a sustainable community because development and the jobs it creates are the vehicles for meeting human needs.

WIN accepts proposals for projects that advance its work within five focus areas:

- Agriculture and Pollution Prevention
- Communication / Regional Marketing
- Land Use
- Water Resources
- Wildlife Stewardship

In addition to sustainability linkages, WIN evaluates projects by asking whether projects:

- Promote and encourage partnerships by leveraging resources
- Balance long-term focus with short-term results
- Promote excellence by fostering a sense of identification and pride in the watershed
- Serve as pilot or demonstration projects with broad application (can be replicated)
- Fit with WIN's vision, mission, and guiding principles

Agriculture and Pollution Prevention Objectives:

- Marketing region's agricultural products and agri-tourism
- Water quality improvement and pollution prevention including soil erosion issues

Contact E-mail josh@huronpines.org

Contact Phone number (989) 448-2293

Contact Address 4241 Old US 27 South, Ste 2
Gaylord, Michigan, 49735
United States

Organization Executive Officer Brad Jensen

Project Contact Name Josh Leisen

Please state the mission/goals of your organization

It is our mission at Huron Pines to conserve and enhance Northern Michigan’s natural resources to ensure healthy water, protected places and vibrant communities.

Grant Application

Name of the Project: West Branch Tittabawassee River Dam Removal

Is this a New or Existing Project?

Project Start Date Saturday, January 1, 2022

Project End Date Sunday, December 31, 2023

Total Funds required to complete project. 325,000

Amount Requested from Saginaw Bay WIN. 20,000

Please describe the project. How is it innovative? What need(s) does it address? Is there a relationship between this project and other programs/projects occurring in the watershed?

This project will fully remove the West Branch Tittabawassee River Dam (44.172, -84.398), which will reconnect 6.1 miles of high-quality coldwater habitat in this MDNR-Designated Trout Stream, reduce inputs of sediment and associated pollutants, and restore a suite of natural river functions. This obsolete concrete dam is located on a private property, but the benefits extend to the fish, other aquatic organisms, anglers, and other outdoor recreationists throughout this river system. The West Branch Tittabawassee River is a headwater stream of the greater Saginaw River Watershed, ultimately flowing into Saginaw Bay. The private landowner contacted Huron Pines voluntarily for assistance and is investing \$40,000 in cash towards this project. Huron Pines has secured funding for engineering designs and permitting (permit is under review), and the requested WIN funding will be used to support construction costs for the dam removal and related restoration work at the project site. WIN also provided \$10,000 for the design phase, which was expended in 2021.

The primary project goal is to fully remove the aging concrete dam to functionally reconnect aquatic habitat (i.e., restore fish passage) and to address river impairments caused by the dam (erosion, disrupted sediment transport, altered channel geometry due to high water velocity over the dam). The project will also eliminate the risk of future dam failure at this site. A secondary goal is to maintain the landowner’s access to the majority of the their property on the south side of the river by installing an aluminum box culvert sized to exceed bankfull width of the river and which will allow fish passage at all times of the year and accommodate flood flows. Lessons learned during this project will also be

used to help inform future dam removal work and hopefully inspire additional dam owners in northern Michigan to consider dam removal to protect and enhance the regions rivers (the landowner contacted Huron Pines upon reading about the success of the Gingery Dam removal project on the Middle Branch Cedar River in 2019, which also received WIN funding).

This is a standalone project that will result in the elimination of a problematic dam, thus providing permanent benefits to this river, yet it adds cumulative value to our collective efforts to reconnect, restore, and protect coldwater streams across northern Michigan.

WIN's key focus area is sustainability - that relationship between the economy, the environment and our communities. Please discuss the sustainability linkages in the project.

The dam represents the single greatest source of habitat impairment on the West Branch Tittabawassee River, which is an otherwise healthy, intact, coldwater stream flowing through a relatively well-forested landscape. Removing it will permanently reconnect aquatic habitat and improve hydrology and other river functionality. Well-connected river systems allow trout and other aquatic species to move freely within rivers to access critical habitat types to carry out their life cycles (spawning, foraging, refuge from stressors). In turn, self-sustaining populations of wild fish support healthy aquatic ecosystems and provide recreation opportunities to anglers, who spend money and support local outdoor-recreation and tourism based economies.

Describe how the project fits with WIN's Vision, Mission and Guiding Principles.

This project will protect and restore a coldwater river and DNR-designated trout stream by removing the existing dam and replacing it with an appropriately-sized culvert (the landowner is collaborating and investing in the project on the condition that foot and private vehicle access across the river will be maintained). Removing the dam will restore fish passage to 6.1 upstream miles of important habitat while permanently restoring a suite of natural river processes including hydrology, channel geometry, and transport of sediment through the river at the project location. The long-term benefits to the fishery will also benefit coldwater anglers and the businesses they support.

What tangible results do you expect from the project and how will you measure them?

The existing dam will be removed, reconnecting 6.1 miles of upstream habitat and restoring river function. The project will also eliminate any risk of a future dam failure. Success will be measured by 1) successful removal of the dam, 2) verification that stream flow velocity and depth are suitable for fish passage post-project, 3) landowner has access across the river to the south portion of property, 4) sand trap will be maintained to capture mobilizing sediment from former impoundment area to protect gravel beds and other aquatic habitat. A final inspection will be conducted to ensure work was completed in accordance with the designs and permit requirements. Corrective actions will be taken to ensure compliance, if necessary.

How do you plan to communicate the project with the public or your intended audience?

Huron Pines will share project updates and highlights through social media channels, press releases, print and/or electronic newsletters, at partner meetings, and through formal grant reporting. We may participate in TV or radio features if given the opportunity. We will acknowledge project partners and funders in our communications.

Do you intend to cooperate with other agencies or non-profit organizations on this specific project? If not, why not?

Yes, we are collaborating with US Fish and Wildlife Service, Michigan DNR, and Michigan EGLE on technical input, permit review, and monitoring activities. Huron Engineering & Surveying, Inc. was hired to complete designs, permit applications, and provide construction oversight. A qualified construction contractor will be hired via competitive bid process to remove the dam and install the new culvert, as well as maintain the sand trap monthly for approximately 12 months after dam removal. The private landowner is a key partner and is contributing \$40,000 cash to this project. Several other organizations are providing project funding.

What specific items would be covered by a grant from the Saginaw Bay WIN program?

The WIN funding will primarily be allocated toward the construction contractor fee for dam removal (approximately \$16,000) and the remainder will help cover Huron Pines staff expenses for project management and grant administration (\$4,000).

How do you propose to recognize a grant from the Saginaw Bay WIN program?

Huron Pines will promote our funders and partners, including Saginaw Bay WIN, in social media posts, press releases, and other outreach related to this project.

Project Success. What does success look like for your project? How will you determine whether the project has been successful?

The project will be considered successful upon verification that the dam was removed per designs and permits and stream flow conditions are suitable for fish passage (e.g., average flows <3 feet per second through project area with sufficient water depth and substrate heterogeneity).

Saginaw Bay WIN Grant Project Budget

Personnel Expenses 50,000

Please Describe Personnel Expenses

Coordinating with project partners, including developing an RFP for construction services, hiring a contractor, partner meetings, construction site visits, outreach and communications, grant administration, and reporting.

Materials / Supplies Expenses 73,000

Please Describe Materials / Supplies Expenses

New crossing structure, erosion control materials including silt fence, rock rip rap, native plant seed.

Equipment Expenses 120,000

Please Describe Equipment Expenses

Construction contractor fees for dam removal and installation of new culvert. Sand trap maintenance.

Communication / Marketing Expenses 0

Please Describe Communication / Marketing Expenses

This is reflected in the personnel category.

Other Expenses 30,000

Please Describe Other Expenses

Engineering and permitting fees.

Total Project Expenditures (including proposed WIN grant) 52,000

Please Describe Amounts Already Raised for the Project and Sources

Mileage to/from project site and project meetings.

18.72% indirect per federally approved NICRA (on match funds, indirect will not be billed to Saginaw Bay WIN).

What is your time frame to obtain the total funding required if you do not have it already? 2022, or 2023 if necessary.

Grant Application Submit

The information provided by applicants in this form shall not be shared outside of the applicant's organization and contacts and directors, committee members and other participants in the Saginaw Bay WIN program. Public information will only be released if the grant application has been accepted and approved by the Saginaw Bay WIN program.

Attachments. Please upload any materials that help describe your organization or project (ex. annual report, marketing materials, project budget etc)



Name Josh Leisen

Email josh@huronpines.org

Address 418 N Ohio Ave B
Gaylord, Michigan, 49735

I agree that the information herein are true and correct Yes

Date & Time of application. Tuesday, November 23, 2021 10:30

West Branch Tittabawassee River Dam Removal and Stream Restoration (Roscommon County, MI)

The West Branch Tittabawassee River is a high-quality coldwater stream located within the greater Saginaw River Watershed. It is a Michigan DNR-designated trout stream and home to brook trout, brown trout, and various native aquatic species including freshwater mussels and diverse aquatic insect larvae, which make up an important part of the aquatic and riparian food web. Fish and other aquatic organisms require clean, well-connected rivers to thrive and access different habitat types needed to carry out life cycle functions including spawning, foraging, and refuge from predation and environmental stressors. Dams and perched road/stream crossing structures often fragment aquatic habits in Michigan.

Huron Pines is serving as project manager on an effort to remove an obsolete concrete dam located on private property at 10500 Greenwood Road, Gladwin, MI 48624 (Roscommon County, 44.172, -84.398). The dam completely blocks fish passage, disrupts hydrology, stream channel geometry, and transport of sediment, wood, and other material through the river system, and serves no useful purpose. The former 4-acre impoundment was drawn down in the 1990s (see Figure 1), but the dam represents a vertical discontinuity in the stream channel and has very high flow velocities (>5 feet per second), which further prevents fish passage and is contributing to erosion of the stream channel and adjacent streambanks.

The dam removal project and associated river restoration will reconnect 6.1 miles of high-quality coldwater river in this headwater system of the Saginaw River Watershed, benefitting trout, freshwater mussels, and many other native aquatic organisms. This dam is upstream from other barriers to the Great Lakes and so there are no concerns about invasive sea lamprey passage at this project location. The project will also reduce erosion and sediment inputs into the river channel, which will help protect exposed gravel from inundation by fine sediment. Gravel beds are critical to successful trout spawning and serve as a home to many other fish and aquatic invertebrate species.

The private landowner has pledged, in writing, to provide \$40,000 cash towards construction costs of the project, which will include full removal of the existing dam, installation of a box culvert sized to span bankfull width of the stream, at minimum, and other site restoration activities as necessary to restore fish passage and address erosion problems. The landowners request a crossing be maintained for access to the bulk of their property, which lies south of the river, which is why we are installing the new culvert.

Funding for design and permitting is already secured, including \$24,565 from the USFWS National Fish Passage Program and \$10,000 from the Saginaw Bay Watershed Initiative Network (WIN). Additionally, \$75,000 of construction funding has been raised to date, including the \$40,000 landowner commitment, \$10,000 USFWS, \$10,000 Walters Family Foundation, and \$15,000 Bay Area Community Foundation.

The total cost for the West Branch Tittabawassee River Dam Removal project is \$325,000. We therefore are applying to Saginaw Bay WIN and other funding sources to raise the additional \$229,405 needed to fully implement this project. We have a pending \$125,000 proposal in to DNR and intend to apply for an additional USFWS grant for construction activities in their early 2021 cycle.

Huron Engineering & Surveying, Inc. was hired via competitive bid process to complete engineering designs, prepare permit applications, administer construction contractor bid process, and provide construction oversight services and final inspection. Final designs and permitting will be completed in 2021. Partners will implement construction in summer/fall of 2022 if full funding can be secured. Otherwise, construction activities will be delayed to summer of 2023, until the full funding is in place.

Figure 1: Satellite imagery and general project location map (GPS coordinate of dam: 44.1722, -84.3979)



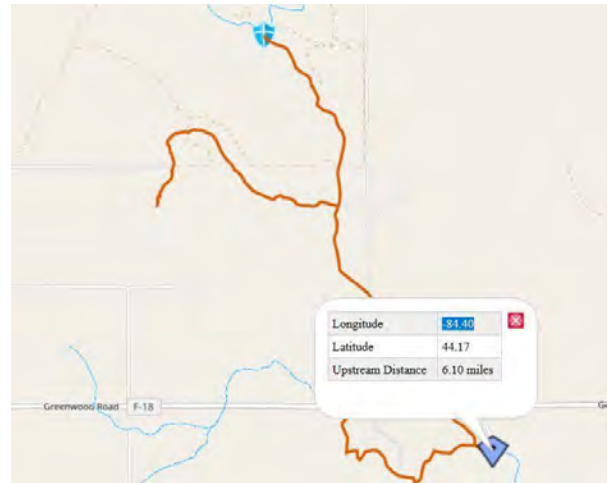
Figure 2: Looking upstream at existing dam structure from across the downstream scour pool



Figure 3: View of top of the dam structure



Figure 4: 6.1 upstream miles will be reconnected



Point of Contact

Josh Leisen, Senior Project Manager, Huron Pines
Address: 4241 Old US 27 South, Ste 2, Gaylord, MI 49735
Phone: 989-448-2293x16
Email: josh@huronpines.org

Saginaw Bay Watershed Initiative Network
P.O. Box 734
Bay City, MI 48707

Please answer the following questions in the space provided. You may include a one-page attachment. When completed, your application packet should not exceed four pages. Send your completed form electronically to info@saginawbaywin.org and mail a signed, hard copy to Saginaw Bay WIN, P.O. Box 734, Bay City, MI 48707. **Proposals may be submitted at any time.** If you have questions, please call (989) 892-9171.

SECTION 1 - GENERAL			
Project Name Saginaw River Headwaters Rec Area Fishing Pier			
Sponsoring Organization / Local Champion Saginaw County Parks and Recreation Commission			Is the sponsor a 501(c)(3) organization? <input type="checkbox"/> Yes <input checked="" type="checkbox"/> No
Name & Position of Contact Person Brian Keenan-Lechel, Director			
Address 111 S. Michigan Ave.			
City Saginaw	State Michigan	Zip 48602	Phone (989)274-7215
Fax (989)790-5284	Email BLEchel@saginawcounty.com		Amount Requested \$20,000
Project Start Date 4/1/2023	Project End Date 10/1/2024		Geographic Area Served City of Saginaw – broader Great Lakes Bay Region

SECTION 2 – PROJECT DESCRIPTION
<p>Please describe the project. How is it innovative? What need(s) does it address? Is there a relationship between this project and other programs/projects occurring in the watershed?</p> <p>Saginaw River Headwaters Rec Area, located in the City of Saginaw, Michigan, will open to the public in the Summer of 2022. This project tells the story of a broad-based coalition of public and private entities overcoming significant challenges and embracing a common vision to restore an important natural resource, while contributing to the revitalization of the community and providing a quality-of-life enhancement for an underserved urban population in the City. The project site is a long abandoned 334 acre, one million square foot automobile manufacturing complex, owned by General Motors Corporation and known as Saginaw Malleable Iron (SMI). The foundry was established in 1917 and sold to General Motors in 1919 before closing in 2007.</p> <p>The SMI properties were acquired by RACER Trust following the General Motors bankruptcy in 2011. RACER (Revitalizing Auto Communities Environmental Response) Trust was created and assigned endowment funding to monitor and remediate industrial brownfields for over 80 GM sites across the Midwest, which included the Saginaw Malleable Iron properties. More than \$9M dollars was appropriated to continue contaminant monitoring and mitigation on the site. Over \$5M was spent for remedial efforts to meet recreational use standards established by the United States Environmental Protection Agency and Michigan Department of Environment, Great Lakes & Energy for protecting the water quality of contiguous river systems. RACER also has responsibility to continue monitoring remaining contaminant levels and undertaking future remedial work as necessary.</p> <p>The proposed recreation area is located along the west side of the Saginaw River at the southerly City limits. It features nearly one mile of shoreline that terminates near the confluence of the Tittabawassee and Shiawassee Rivers joining to form the Saginaw River. The Saginaw River flows 22 miles north to Saginaw Bay on Lake Huron and is part of the Saginaw Bay Watershed, which historically is the largest and most productive ecosystem and drainage basin in Michigan. The Watershed has been designated a “United States Important Bird Area”. In addition to its global significance to migratory waterfowl, along with 265 species of birds, the watershed boasts a great diversity of other wildlife including mammals, reptiles and amphibians and a world class Walleye fishery. The latter brings us to this specific project proposal, a fishing pier along the Saginaw River shoreline within the property boundary, just south of the Center St bridge.</p> <p>The fishing pier addition will be only the second ADA compliant fishing access point on the Saginaw River in the City of Saginaw. The fishing pier will also incorporate educational and interpretive signage detailing the watershed and fishery, including MDHHS’ Eat Safe Fish Campaign. The project will leverage funding totaling over \$500,000 from various sources, mainly the Michigan Natural Resources Trust Fund and the Natural Resource Damage Assessment Trustee’s Round 2 funding. This will bring the total investment at Saginaw River Headwaters Rec Area to over \$2.5 million, or \$14.5 million if you include the dedicated RACER funding for remediation and continued monitoring.</p>

SECTION 3 – COLLABORATING ORGANIZATIONS

What other organizations are participating in this project and what are their roles?

Michigan Department of Natural Resources – Site Owner (long-term leased to Saginaw County), Prior MNRTF awardees (\$890,000 in total).

Saginaw Community Foundation – Saginaw County Parks Fund / fiduciary assistance on projects spanning multiple years

Saginaw Basin Land Conservancy – Site restoration partners via phragmites eradication contract

NRDA Trustees – Prior project commitment of \$1,000,000 including a \$750,000 maintenance endowment.

Spicer – Project Design / Grant Writing

SECTION 4 – SUSTAINABILITY LINKAGES AND GOALS

Describe the project's goals and how you will measure whether it has achieved those goals.

The Saginaw River Headwaters Rec Area fishing pier project aligns with multiple goals and objectives listed in Saginaw County Parks 5 Year Recreation Plan.

Goal C: Develop recreation opportunities that focus on and utilize Saginaw County's water resources such as the Tittabawassee River, Shiawassee River, Saginaw River, Bad River, Cass River and Haithco Lake.

Objective: Enhance existing and develop new public fishing opportunities in Saginaw County

Action Item: Develop canoe launch/fishing platform(s) on area rivers such as the Saginaw, Tittabawassee, Bad and Cass Rivers.

Measure: Successful installation of the fishing pier will achieve the listed goal and objective.

Goal D: Identify and encourage accessibility improvements at County parks by incorporating Universal Design in all new updates and when upgrading existing amenities, as appropriate.

Objective: Ensure all new improvements are developed to be universally accessible, whenever possible.

Action Item: Continue to support park land and facilities in the City of Saginaw

Measure: Utilizing Universal Accessibility in the planning and implementation process will achieve these goals, however an additional measure to achieving these goals would be disabled populations utilizing the fishing pier development. This will be monitored with our park usage utilizing various means including staff observation, trail cameras and pedestrian counters.

Goal E: Continue to determine the recreational needs and wants of all Saginaw County citizens, including those living in urban areas.

Objective: Continue to focus on providing recreation programming and access in the City of Saginaw and across the County.

Measure: The investment of this long-lasting fishing access site in the City of Saginaw is a great example of focusing on recreational needs in the City of Saginaw, given there is only one additional public fishing site within the City of Saginaw.

SECTION 5 – RELATIONSHIP TO WIN OBJECTIVES

Describe how the project fits with WIN's Vision, Mission and Guiding Principles.

An ADA compliant fishing pier on the Saginaw River meets the following vision, mission and guiding principles of WIN. More broadly, the Saginaw River Headwaters Rec Area project supports many of the same, as well as habitat restoration/wildlife stewardship through natural and intentional reclamation of the once industrial lands and water.

SECTION 6 – RESULTS

What tangible results do you expect from the project and how will you measure them?



We expect a well-utilized fishing pier on the Saginaw River. This will be measured through usage counters, as well as staff interviews and online feedback. Possibly the most exciting component is that this stretch of river is very popular for walleye, catfish, perch and other species. Adults, kids, and everyone in between will have the opportunity to catch some really nice fish in this location.

SECTION 7 – COMMUNICATION

How do you plan to communicate your project to the public and/or your intended audience?

Press releases, website/social media, Saginaw County Parks' newsletter, and other marketing initiatives.

SECTION 8 – BUDGET

	Total Budget	WIN Funds
Personnel Expenses (briefly describe) Grant application and project engineering. Funding sources in addition to WIN MNRTF Development Grant Saginaw County Parks Millage	\$50,000	\$5,000
Material and Supply Expenses (briefly describe) Full project construction, materials and management. Funding Sources in addition to WIN: NRDA Round II Funding MNRTF Development Grant	\$450,000	\$10,000
Equipment Expenses (briefly describe) Shoreline scrub vegetation clearing and site preparation. Additional benefit of providing rustic shore fishing opportunities prior to full construction. Funding sources in addition to WIN: Saginaw County Parks Millage	\$10,000	\$5,000
Communication/Marketing Expenses (briefly describe) Press releases throughout the process and grand opening/ribbon cutting. Funding source: Saginaw County Parks Millage	\$5,000	
Other Expenses (briefly describe)		
Total Project Cost	\$515,000	
Funds Requested from WIN		\$20,000

What funds have already been obtained for this project? (describe sources)

Saginaw County Parks Millage Funding – contributions to personnel expenses, equipment expenses and communications/marketing expenses.

How do you plan to finance the portion not funded by WIN?

MNRTF Grant Application – April 1, 2022

NRDA Trustee's Round 2 Funding December 31, 2021

Have you contacted the community foundation in the area most directly benefited by your project? If yes, with what result?

Yes, continued communication with Saginaw Community Foundation on Saginaw County Park related projects. The Saginaw Community Foundation houses a County Parks Fund which has been utilized in multiple park developments including the Saginaw Valley Rail Trail, Imerman Memorial Park, Haithco Recreation Area and other projects.

Is this an on-going project? If yes, how will funding be continued?

The installation of the fishing pier is a one-time project, however, Saginaw River Headwaters Rec Area is an ongoing project with annual maintenance and future capital expenses to be undertaken by the Saginaw County Parks and Recreation Commission and the Michigan Department of Natural Resources.

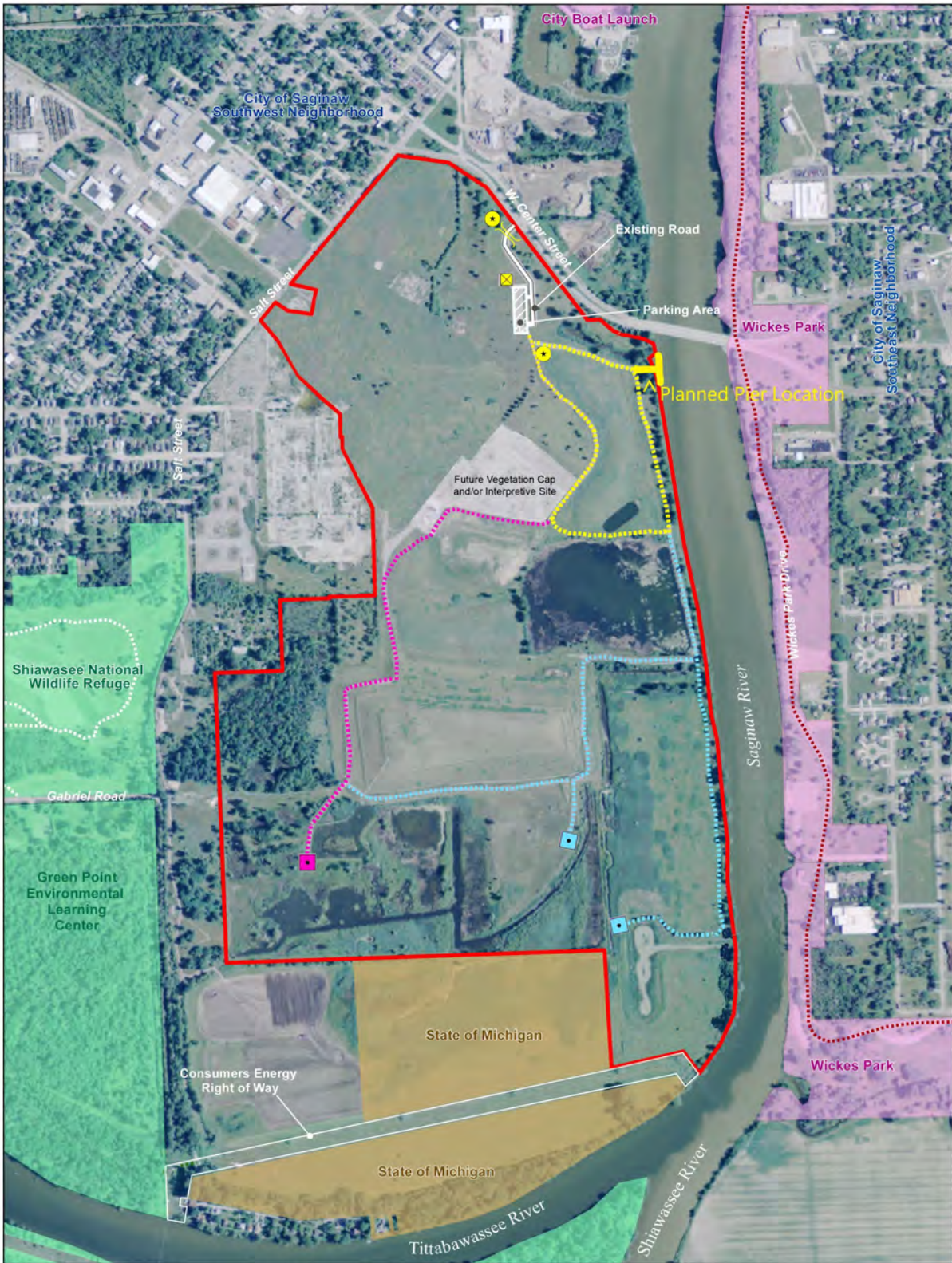
SECTION 9 – CERTIFICATION

Our governing board approves the submission of this grant request. I certify that the information contained herein is accurate to the best of my knowledge.

Authorized Signature

Date

Print Name and Title



Proposed Recreation Site Development Plan

Legend

- Proposed Property Boundary (332 acres)
- City of Saginaw
- Existing Foot Trail
- Proposed Iron Belle Trail

Phase 1 Development (MNRTF 2016 Grant)

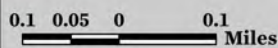
- Entrance Gate
- Signage
- Concrete slabs for portable restrooms
- Loop Trail

Phase 2 Development (MNRTF 2017 Application)

- Observation Trail
- Observation Platform

Future Phase

- Riverfront Trail
- Observation Platform
- Connection Point





Saginaw Bay Watershed Initiative Network

What is WIN?

The Saginaw Bay Watershed Initiative Network (WIN) is a collaborative, community-driven quality of life initiative created by a variety of environmental, business and community interests in 1996. WIN was formed to create a more sustainable future for all who live, work and play within the Saginaw Bay watershed. One of the ways in which WIN accomplishes this objective is by providing financial support to projects that link the economic, environmental and social needs of the region.

Our Vision

As stewards of the Saginaw Bay Watershed, we value our shared, unique resources, and together we will balance economic, environmental, and social priorities to enhance the quality of life for this and future generations

Our Mission

We will cooperatively develop a shared identity for the Saginaw Bay watershed as a sustainable community. We will create opportunities to enhance understanding of sustainability, connecting people, resources, organizations and programs through regional networks of local projects.

Guiding Principles

- Provide a pleasant and healthy environment
- Conserve historic, cultural and natural resources
- Integrate economic prosperity, ecology and aesthetics
- Use land and infrastructure effectively
- Continually evaluate and refine shared vision and goals

Program Overview

WIN welcomes proposals that advance the search for sustainable solutions to current watershed and community challenges. WIN is responsive to new ideas, new research and new approaches, recognizing that such innovation is necessary to move the concept of sustainability forward in the Saginaw Bay watershed. The sustainability approach integrates economic goals with environmental and social goals and is based on the premise that meeting human needs for all people today should not impair the ability of future generations to meet their needs. A strong local economy is at the core of a sustainable community because development and the jobs it creates are the vehicles for meeting human needs.

WIN accepts proposals for projects that advance its work within five focus areas:

- Agriculture and Pollution Prevention
- Communication / Regional Marketing
- Land Use
- Water Resources
- Wildlife Stewardship

In addition to sustainability linkages, WIN evaluates projects by asking whether projects:

- Promote and encourage partnerships by leveraging resources
- Balance long-term focus with short-term results
- Promote excellence by fostering a sense of identification and pride in the watershed
- Serve as pilot or demonstration projects with broad application (can be replicated)
- Fit with WIN's vision, mission, and guiding principles

Agriculture and Pollution Prevention Objectives:

- Marketing region's agricultural products and agri-tourism
- Water quality improvement and pollution prevention including soil erosion issues

- Production of value-added, diversified agricultural products
- Preserving farming as a viable industry for the next generation of farmers
- Protection and preservation of agricultural lands
- Bridging gap between urban and rural community interests
- Promotion of alternative and improved energy sources

Communications and Regional Marketing Objectives:

- Promoting the Saginaw Bay watershed as a tourist destination and recreation area
- Education about concept of sustainability

Land Use Objectives:

- Promotion of “green” / conservation-based development
- Encouraging regional cooperation on land use issues
- Education about land use issues
- Open space protection (because of limited funds, WIN does not support land acquisition costs)

Water Resources Objectives:

- Pollution prevention (nonpoint source & point source)
- Wetland restoration
- Fisheries (improve access to, health, promotion, Fisheries Scoping Study implementation)
- Access to water resources
- Improvement of water quality leading to the de-listing of the Saginaw Bay ecosystem as an Environmental Protection Agency (EPA) Area of Concern

Wildlife Stewardship Objectives:

- Habitat restoration lakeward/riverward of the 585 foot contour
- Promotion of habitat-related events
- Providing access to significant habitat and wildlife areas
- Protection of significant habitats
- Educational projects (habitat & wildlife related)

Funding Availability and Eligibility

Please contact Saginaw Bay WIN prior to submitting an application to discuss the project and its eligibility. WIN can be reached by email at info@saginawbaywin.org or by telephone at 989-892-9171. Grant proposals are reviewed on a continual basis with financial awards made twice a year. They are no grant deadlines.

Projects are evaluated by a unique network of task groups that are central to WIN’s community-based evaluation process. Through the work of the task groups, proposals are reviewed and refined in cooperation with the applicant. The task groups are formed around WIN’s five focus areas.

If a project receives a favorable nod from a task group, it will be forwarded to WIN’s Resource Group for further consideration. Those projects that are approved by the Resource Group are presented to WIN’s Funders Network for final consideration.

Eligible organizations include nonprofit 501c(3) groups, local governments, subdivisions of local governments and educational institutions.P

Projects must take place within the Saginaw Bay Watershed

Organization Name Saginaw Basin Land Conservancy

Are you a registered Charity / 501c(3) ?

If Yes to above , please provide Your Charitable Number 38-3362048

Do you have a Web Page ?

If yes, please submit website address: www.sbhc-mi.org

Contact E-mail zachary@sblc-mi.org

Contact Phone number (989) 891-9986

Contact Address 706 S. Euclid Ave.
Bay City, MI, 48706
Canada

Organization Executive Officer Zachary Branigan

Project Contact Name Zachary Branigan

Please state the mission/goals of your organization

Take action at the intersection of people and nature, elevate landscapes for the benefit of all, provide leadership in conservation.

Grant Application

Name of the Project: Better Branches Regional Tree Initiative

Is this a New or Existing Project?

Project Start Date Saturday, January 1, 2022

Project End Date Tuesday, December 31, 2024

Total Funds required to complete project. 168500

Amount Requested from Saginaw Bay WIN. 15000

Please describe the project. How is it innovative? What need(s) does it address? Is there a relationship between this project and other programs/projects occurring in the watershed?

Better Branches Regional Tree Initiative is a project designed to set in motion a perpetual cycle of growing trees on vacant lots to repopulate our communities in the wake of the devastating impact of canopy loss. The product of this proposal would be an industry of community groups and volunteer participation working together. The product of that industry would be trees in their thousands grown locally and planted locally on public and private land, wherever they are needed.

Trees sustain wildlife, provide shade, stabilize soil, build character, and serve as the lungs of our community. For too long, our tree canopies have been declining. While we may see trees everywhere, the quality, density, health, size, and diversity of trees in our region have all declined. A healthy place requires healthy trees, and our region's tree canopy is under threat.

The Saginaw Basin Land Conservancy has been working for over five years on another troubling challenge, vacant land. Our Pollinator Project has empowered us to raise over \$1 million to remediate blight, turn the tide of illegal dumping, and plant millions of new wildflowers. This work will continue and has triggered many new opportunities that are in their infancy but have great potential to play a role in the renaissance of Saginaw and our region. This proposal builds on that effort.

Our objective with this new regional tree initiative, Better Branches, is to use one idea to solve more than one problem. In short, we would institutionalize the implementation of a regional "tree factory" by

repurposing vacant land in Saginaw and beyond. This approach would create opportunities for our volunteer teams, summer youth program partners, and regional corporate volunteers to engage the landscape in a new way. It would provide educational opportunities for young men and women and would build an inventory of useful, homegrown tree stock to be applied in a variety of ways across Mid-Michigan.

Activating vacant land would leverage the investment in our Pollinator Project, giving us a new tool to elevate vacant properties formerly affected by blight. It would allow us to grow and deploy new trees in the hundreds, and even thousands, to our network of conserved lands that have also faced a decline in the tree canopy, especially following the loss of so many ash trees to the Emerald Ash Borer. This builds upon the removal of blight and several years of hard work to further elevate those sites into productive use.

This project would help our municipal partners meet their goals of replacing lost trees and stopping the further reduction of tree cover in our communities. In short, everywhere we and our partners work, and in almost every project we do, having a new supply of trees grown on our own in our local soils would be a tremendous benefit. It would provide a source of perpetual matching value for our conservation work.

This approach is derived from our 2020 urban agriculture feasibility analysis, completed in partnership with the Dow Fellows at the Graham Sustainability Institute at the University of Michigan. That project highlighted the opportunity to grow beneficial plants on vacant land and the challenges of growing food in meaningful quantities. Complex harvesting, irrigation, and distribution all require an infrastructure that does not yet exist in our community. The concept of using vacant land to grow a productive community resource is a solid idea, so the initial approach of growing produce on vacant land was retooled to support the development of an urban nursery capable of improving the tree canopy of Saginaw.

WIN's key focus area is sustainability - that relationship between the economy, the environment and our communities. Please discuss the sustainability linkages in the project.

Throughout the history of the Saginaw Bay Watershed, trees have been an invaluable resource. Early pioneers of this region set the foundation for the communities we have today thanks to the boom of the lumber industry and the critical role that Bay City and Saginaw played in it. The relationship between trees, rivers, and community has been crucial to the prosperity of this region and, for better and for worse, continues to be a significant factor in the quality of life we experience today.

Historically, this region was a mix of vast forests and wetlands. These land covers created capacities to hold and release water due to the natural systems they fostered. The mature tree canopy provided shade and helped control heat, and root systems were soaked in vast water quantities. Trees across our region filtered carbon from the atmosphere and provided habitat for wildlife.

Extensive timbering of our traditional forests changed the landscape of the Saginaw Bay Watershed forever. As an export, timber allowed our communities to thrive. The agriculture that followed played no less a role in the success of our region, but the loss of that historic tree cover came at a cost. Tree canopies remain far below a sustainable level and are further threatened by a succession of harmful blights and invasive pests that have already severely impacted our elms and ashes..

Locally and nationally, development, urbanization, and industrial agriculture have significantly reduced the tree canopy. While a universal standard can not be applied to every community, a 40% tree canopy goal is a good rule-of-thumb, based on publications from the Arbor Day Foundation and American Forests, especially in moderate-sized communities in traditionally wooded areas like ours. In our immediate area today, only the City of Midland, buoyed by the 500-acre Midland City Forest, meets this standard. Our initial analysis using the Arbor Day Foundation's i-Tree tool shows that Saginaw has a 23% canopy, and Bay City lags further behind at 17%. This proposal includes a far more detailed analysis of these figures to ensure an even more accurate baseline.

According to the Arbor Day Foundation, planting 100 trees removes 50 tons of carbon dioxide (CO₂) and 430 pounds of other pollutants every year. Our Better Branches project would provide a softer on-ramp to the carbon question, more free of political influence, due to the universally supported nature of trees. Involving leadership across the region that take on the Great Lakes Bay Regional Sustainability Pledge, we can provide a vehicle for those partners to meet their sustainability goals. Our program also includes a tree donation program, called Taking Root, which will be financially independent of the rest of this scope and will be self-supporting, giving individuals an opportunity to contribute to the regional canopy.

Trees provide a mutually beneficial role in improving the climate and public health of the community. Our plan would leverage blight remediation resources and the last five years of work to elevate recently rescued landscapes. It would create opportunities for area youth for both education and seasonal employment. All of this could be accomplished while kickstarting a more robust and sustainable tree canopy for our most populated areas and conserved lands.

Lastly, we believe this initiative will help the most vulnerable populations in the immediate Saginaw Bay Watershed. Quality tree canopy is disproportionately lower in areas with fewer resources, which are traditionally within redline boundaries, have higher vacant land totals, and coincide with industrial areas. This issue is known as tree equity. In short, these areas will have less natural defenses against potentially harmful climate change, which could accelerate their decline compared to more affluent areas with stronger canopies. When we grow trees in these neighborhoods, we help insulate them against the heat island effect and the many detrimental impacts of higher temperatures. This can result in lower energy demands for air conditioning and more sustainable use of existing buildings. Elevating these neighborhoods with an improved tree canopy equates to a more vigorous and sustainable region.

Describe how the project fits with WIN's Vision, Mission and Guiding Principles.

In the Better Branches initiative, trees are the vehicle by which we will improve the watershed's prosperity, ecology, and aesthetics. Across the board, communities with improved tree canopy relative to other local areas rank higher in nearly every category related to prosperity and quality of life. Adding trees to the landscape will help mitigate the effects of climate change and add valuable habitat to the landscape.

What tangible results do you expect from the project and how will you measure them?

At its core, this project relies on trees as a means for impacting the community in a variety of ways. As a general rule, communities that emphasize trees are more desirable in most metrics by which communities are judged. By gathering data and improving the canopy locally, we hope to see some of the same metrics surrounding safety, stability, the economy, and environmental justice improve. More specifically, though, the following objectives will be met as a result of this work:

Trees are the primary tangible result of this project. By setting goals based on detailed analysis, we can establish target planting rates and use vacant land to grow the required trees.

An enhanced tree canopy analysis of Bay City and Saginaw to help prioritize tree planting locations, identify shortfalls, and track the overall canopy restoration goals and objectives. This will be completed using i-Tree analysis and aerial imagery.

We will track the number of trees planted, the number of volunteer events held, the amount of debris cleaned up, and the number of vacant lots occupied by trees.

Additionally, using national norms and data from i-Tree, we will estimate the amount of carbon sequestered and the impact of tree planting on stormwater.

How do you plan to communicate the project with the public or your intended audience?

Better Branches will utilize a variety of methods to communicate the project's value to the public. The SBLC has a successful track record of communicating progress and project completion through social media channels, a robust physical and email contact list, and in-house produced, professional-quality video distributed via social media that documents and conveys the impact of the SBLC's work. These methods will be used alongside volunteer opportunities related to applicable aspects of the project. Volunteerism is responsible for some of the strongest grassroots connections we have with the public when it comes to our work in the Saginaw Bay Watershed. Creating opportunities for people to engage with our mission on the ground has been transformative in regards to our capacity to tackle work in the field and spread the word about our work.

This unique combination of approaches has been utilized with success by the SBLC for project outreach in the past and we plan to build off of that foundation in the future.

Do you intend to cooperate with other agencies or non-profit organizations on this specific project? If not, why not?

This project would not be possible without widespread collaborative effort by the Saginaw Basin Land Conservancy, the City of Saginaw, the Saginaw County Land Bank and numerous other local non-profit and corporate partners for both volunteer, in kind and financial support.

What specific items would be covered by a grant from the Saginaw Bay WIN program?

Please see the attached budget for a detailed breakdown of how funds from the Saginaw Bay WIN program will be spent. All of the requested funds will be used on expenses related to trees and the installation of trees including volunteer events. A separate request to do a full parcel survey of Bay City is being funded through American Rescue Plan funds provided to the municipality by the federal government. This compliments a 2020 parcel survey within the City of Saginaw to capture valuable land-use data from the two largest urban communities in the areas we serve. Although this specific portion is not funded by WIN, this component gives a layer of ground truthing to the i-Tree analysis and informs specific sites where tree installation and other project activities will occur. This allows SBLC staff to be much more strategic in choosing project sites and ensuring that funds from Saginaw Bay WIN and other partners can have the biggest impact.

How do you propose to recognize a grant from the Saginaw Bay WIN program?

The Saginaw Bay WIN program will be recognized in multiple ways as part of this project. Recognition will parallel our means of communicating the project with the public. Saginaw Bay WIN will be mentioned in all of the SBLC's social media content regarding the project. WIN's support of the project will also be highlighted within donor mailings and email updates per the SBLC's standard practice of recognizing project funder and partner support in outreach materials. The Saginaw Bay WIN logo will also appear on any signage installed as part of the initiative's on-the-ground efforts.

Project Success. What does success look like for your project? How will you determine whether the project has been successful?

This project involves a complex scope that leverages the resources of complimentary, ongoing SBLC initiatives in Saginaw. The scope represents the three-year establishment phase of a program we intend to maintain for the long haul. The start-up costs and effort are considerably higher and more diverse in the first few years, with the project falling into a rhythm of facilitating volunteers and community groups to work with us in harvesting and replanting trees grown on urban nursery lots in Saginaw and replenishing those nursery lots with new starter stock each year. We intend to continually improve our process as we go, training ourselves and our potential partners and volunteers as the project progresses. While the final work plan contains even more detailed stages, the program-level work plan includes, at a minimum, the following:

Year 1:

Completion of a thorough analysis of the Saginaw tree canopy with at least 1000 points of data gives more refined data to aid in prioritizing tree planting locations.

Conversion of roughly 20 city lots or at least 3 acres of vacant property into urban tree nurseries.

Planting of not less than 500 whip stock starter trees plus contingency trees in Saginaw purchased from market partners to initiate the nurseries.
Pruning, maintenance, and monitoring of sites throughout the growing season.
Activation of at least eight community volunteer events to install trees with an average of 20 volunteers per event.
Planting of 250 bare root stock trees in the 10 to 12 foot range in their permanent homes in Saginaw purchased from market partners.

Year 2:

Conversion of roughly 20 city lots or at least 3 acres of vacant property into urban tree nurseries.
Planting of not less than 500 whip stock starter trees plus contingency trees in Saginaw purchased from market partners to initiate the nurseries.
Pruning, maintenance, and monitoring of sites throughout the growing season.
Activation of at least eight community volunteer events to install trees with an average of 20 volunteers per event.
Planting of 250 bare root stock trees in the 10 to 12 foot range in their permanent homes in Saginaw purchased from market partners.

Year 3:

Conversion of roughly 20 city lots or at least 3 acres of vacant property into urban tree nurseries.
Pruning, maintenance, and monitoring of sites throughout the growing season.
Initial harvest of 500 SBLC-grown year-one urban nursery trees for distribution and SBLC-led planting throughout the community.
Replacement at a rate of 2:1 as possible for all harvested nursery trees.
Activation of at least eight community volunteer events to install trees and backfill harvested trees with an average of 20 volunteers per event.

As we harvest trees, we will replant new nursery stock in their place with a target rate of 2:1 to ensure that we have sufficient future stock available in subsequent years. As stated before, trees will be staggered in terms of their maturity at the initial installation. Once a supply chain is established, new trees will be from cuttings taken from harvested mature trees, so the direct costs decline dramatically.

We will plant 1,000 trees in their permanent homes throughout this three-year scope, with an additional 500 on their way to maturity and relocation once harvested from the nurseries in the following year. If replanting from our own cuttings each year at a rate of 2:1 to account for trees that do not survive, this will set in motion a perpetual cycle of growing, harvesting, replacing nursery stock, and planting trees in the City that will produce at least 500 trees ready for harvest every year as long as the cycle continues.

We believe that this work will have widespread, positive impacts on the quality of life. Based on the positive momentum established through the multi-year effort known as the Pollinator Project, this project will continue to build on that base and elevate the landscape throughout the City of Saginaw. The Pollinator Project successfully established relationships and activated partners at the City and County levels to take illegal dumping and vacant land stewardship seriously.

This tree initiative will set in motion the creation of an annual stockpile of trees that will be grown to a suitable size for transplanting to their final homes. We plan to establish at least three nursery sites in the first season. By the end of three years, we will have thousands of trees planted in the City and several hundred in their final locations, helping to reforest and improve air quality, stormwater retention, carbon sequestration, heat mitigation, and a whole host of other benefits that trees bring to a community.

Saginaw Bay WIN Grant Project Budget

Personnel Expenses	39950
---------------------------	-------

Please Describe Personnel Expenses

The project budget attachment breaks out both the expenses by the specific tasks associated with the overall effort and associated expenses for each task. Personnel expenditures are factored within each component of the budget.

Trees and installation: This component requires the most significant investment of personnel labor. The logistics of securing plant materials, planning for and executing the planting of these materials, and the care and harvest of trees to be relocated to permanent locations are all components of this aspect of the project.

i-Tree Canopy Analysis & Reporting: While we have included a preliminary report on the tree canopies of Bay City and Saginaw, this proposal includes a far more detailed analysis that involves an investment of personnel labor. First, the i-Tree analysis will be completed again with more than three times as many data points, which requires a more significant investment of staff time. Second, it will include ground truthing by SBLC staff to ensure that our findings and inputs are accurate.

Volunteer Planting Expenses & Supplies: Facilitating volunteers requires coordination, planning, and management onsite. This project also includes volunteer training. SBLC personnel expenses are required at every step of volunteer recruitment and deployment, although those hours provide a significant return on investment. This project is not possible without a purposeful refocusing of our volunteer corps toward the Better Branches concept.

Marketing & Promotion: While not a large part of this program in terms of expense, SBLC personnel will expend time to provide outreach online and in print, at speaking engagements, and at partner meetings. It is our objective to employ our existing outlets to engage the public and motivate a regional discussion on the tree canopy decline and tree equity challenges in our communities.

Peer sharing, conference & travel: This limited component will include a small amount of personnel investment, but will pay large dividends. By learning from other programs in larger communities, we can further develop best practices and improve our work while getting peer review of our efforts. A similar approach has been employed in SBLC projects in the past, such as the Pollinator Project, which resulted in the development of better and more suitable ground cover seed mixes, more efficient planting practices, and better project tracking.

Materials / Supplies Expenses 90050

Please Describe Materials / Supplies Expenses

Direct costs for materials and supplies include trees and the associated supplies needed for installation, mulch, trunk protection, and direct costs of hosting volunteer events.

The largest direct expense of the project is the initial cost of trees for installation in year one. Year one has the largest direct expense related to trees because larger stock trees will be sourced along with fewer small stock trees. In subsequent years, fewer large trees will be purchased as trees are transplanted from prior plantings to areas of need once the nursery trees have matured to a harvestable size. This creates the building blocks for a sustainable stock of local trees that can be moved to where they are needed most and helps give productive purpose to underutilized vacant property.

Equipment Expenses 27000

Please Describe Equipment Expenses

This portion of the budget accounts for SBLC equipment hours, specific equipment rental, maintenance, and fuel associated with all project tasks. Equipment utilized from SBLC inventory and from rental fleets will include brush mowers, augers, power hand tools, trucks and trailers, a 4WD quad, skid steers, and others as necessary.

Communication / Marketing Expenses 6000

Please Describe Communication / Marketing Expenses

The SBLC has a successful track record of communicating progress and project completion through social media channels, a robust physical and email contact list, and via in-house produced, professional-quality video distributed via social media that documents and conveys the impact of the SBLC's work. Additionally, this project will include production of more detailed reports of tree canopy analysis within the target communities.

SBLC is not requesting any funds from Saginaw Bay WIN that would fit into this category, but as detailed above in a previous question, Saginaw Bay WIN will be recognized in all associated materials and reporting related to this project.

Other Expenses 5500

Please Describe Other Expenses

SBLC is not requesting any funds from Saginaw Bay WIN that fit into this category. All associated expenses are covered with the previous sections. Within the overall project budget, the costs that fit into this category are associated with peer sharing and other similar activities. We have learned a lot by working with other organizations and leaders trying to tackle the same challenges and having a small budget to continue peer sharing travel is important to seeing best practices firsthand.

Total Project Expenditures (including proposed WIN grant) 168500

Please Describe Amounts Already Raised for the Project and Sources

This is a new project and funding from Saginaw Bay WIN will be used as one of the first major gifts to leverage regional support for a widespread tree planting initiative and the creation of local tree nurseries reutilizing vacant property within the City of Saginaw. There have been discussions with other funders within the community who have expressed interest and additional applications are in progress.

This proposal represents a first request for this specific initiative, but that is not the full story. Better Branches is a component of a much larger community-wide effort that includes our Pollinator Project and the overall Green Saginaw direction of our work. In 2015, we received a grant totaling \$17,000, from the Harvey Randall Wickes Foundation, to establish our Pollinator Project. Since then, we have raised over \$1 million dollars for the Pollinator Project, on which the Better Branches program depends, and additional vacant land projects in Saginaw. What began as a straightforward project to utilize vacant land for a productive purpose has evolved into a complex initiative to elevate landscapes for all. Because our work over the last five years has developed, we realized the need for the Better Branches initiative.

Recently, SBLC launched the Taking Root Tree Donation program which is a component of the larger regional tree planting effort which allows individuals to donate trees as a tribute gift. This is meant to be a self sustaining program within the project separate from the other components.

What is your time frame to obtain the total funding required if you do not have it already? 12 months

Grant Application Submit

The information provided by applicants in this form shall not be shared outside of the applicant's organization and contacts and directors , committee members and other participants in the Saginaw Bay WIN program. Public information will only be released if the grant application has been accepted

and approved by the Saginaw Bay WIN program.

Attachments. Please upload any materials that help describe your organization or project (ex. annual report, marketing materials, project budget etc)

-  i-Tree analysis data _ cover sheet.pdf
-  Better Branches Regional Tree Initiative flow ...
-  Copy of 2021 Saginaw foundation outreach.p...
-  Copy of Taking Root Brochure.pdf
-  Copy of Taking Root tree donation order form...
-  Saginaw Neighborhood Inventory 2021 Execu...
-  UPDATED WIN Tree Initiative Budget & Reve...

Name Zachary Branigan

Email zachary@sblc-mi.org

Address 706 S. Euclid Ave.
Bay City, MI, 48706

I agree that the information herein are true and correct Yes

Date & Time of application. Tuesday, November 23, 2021 12:30

Type a question
What time is it?



**Better Branches - Regional Tree Initiative
2022-2024**

3 Year Budget by Project Task

	2022	2023	2024	Total
Trees and installation	\$44,500.00	\$30,000.00	\$20,000.00	\$94,500.00
Lumber, hardware, mulch, soils & other elements to beautify/activate lots	\$6,500.00	\$4,000.00	\$3,000.00	\$13,500.00
Equipment, maintenance & fuel	\$9,000.00	\$6,500.00	\$6,500.00	\$22,000.00
i-Tree Canopy Analysis & Reporting	\$2,500.00	\$0.00	\$0.00	\$2,500.00
New equipment purchase & upgrades	\$3,000.00	\$2,000.00	\$1,000.00	\$6,000.00
Volunteer Planting Expenses & Supplies	\$3,000.00	\$2,000.00	\$1,000.00	\$6,000.00
Marketing & Promotion	\$3,000.00	\$2,000.00	\$1,000.00	\$6,000.00
Peer sharing, conference & travel	\$1,000.00	\$1,000.00	\$1,000.00	\$3,000.00
Neighborhood Inventory analysis	\$15,000.00			
Total	\$87,500.00	\$47,500.00	\$33,500.00	\$168,500.00

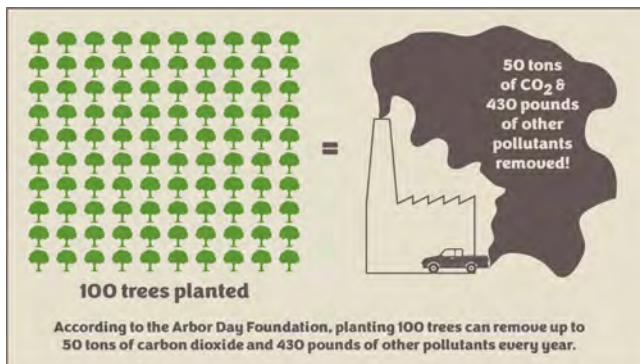
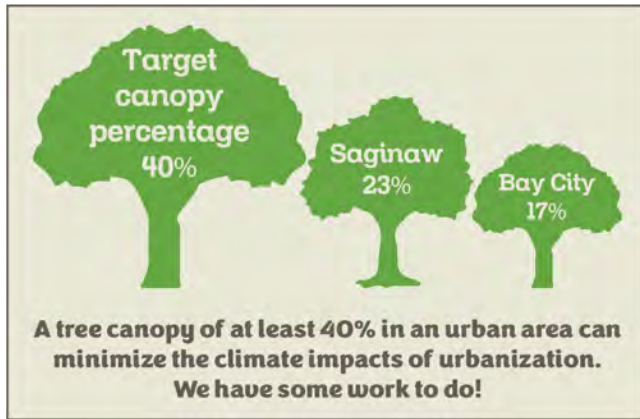
Revenue Plan by Funder

	Saginaw Bay WIN (pending)	Corporate Donors (committed)	Dow (committed)	Land Trust Alliance (committed)	Harvey Randall Wickes Foundation (pending)	Municipal & Agency Support (pending)	Total
Trees and installation	\$11,500.00	\$35,000.00	\$15,000.00		\$24,500.00	\$8,500.00	\$94,500.00
Lumber, hardware, mulch, soils & other elements to beautify/activate lots	\$1,000.00	\$1,500.00	\$2,000.00		\$6,000.00	\$3,000.00	\$13,500.00
Equipment, maintenance & fuel	\$1,500.00	\$4,000.00	\$4,000.00		\$9,500.00	\$3,000.00	\$22,000.00
i-Tree Canopy Analysis & Reporting				\$2,500.00			\$2,500.00
New equipment purchase & upgrades		\$1,000.00	\$2,000.00		\$3,000.00		\$6,000.00
Volunteer Planting Expenses & Supplies	\$1,000.00	\$0.00	\$1,000.00		\$3,000.00	\$1,000.00	\$6,000.00
Marketing & Promotion		\$1,500.00	\$500.00		\$2,000.00	\$2,000.00	\$6,000.00
Peer sharing, conference & travel		\$500.00	\$500.00		\$2,000.00		\$3,000.00
Neighborhood Inventory analysis						\$15,000.00	\$15,000.00
Total	\$15,000.00	\$43,500.00	\$25,000.00	\$2,500.00	\$50,000.00	\$32,500.00	\$168,500.00

Trees are a legacy we leave for future generations. Donate a tree today!

The tree canopy in our community is in decline. Bay City and Saginaw are well below recommended canopy coverage to ensure clean air, comfortable climate, and available wildlife habitat.

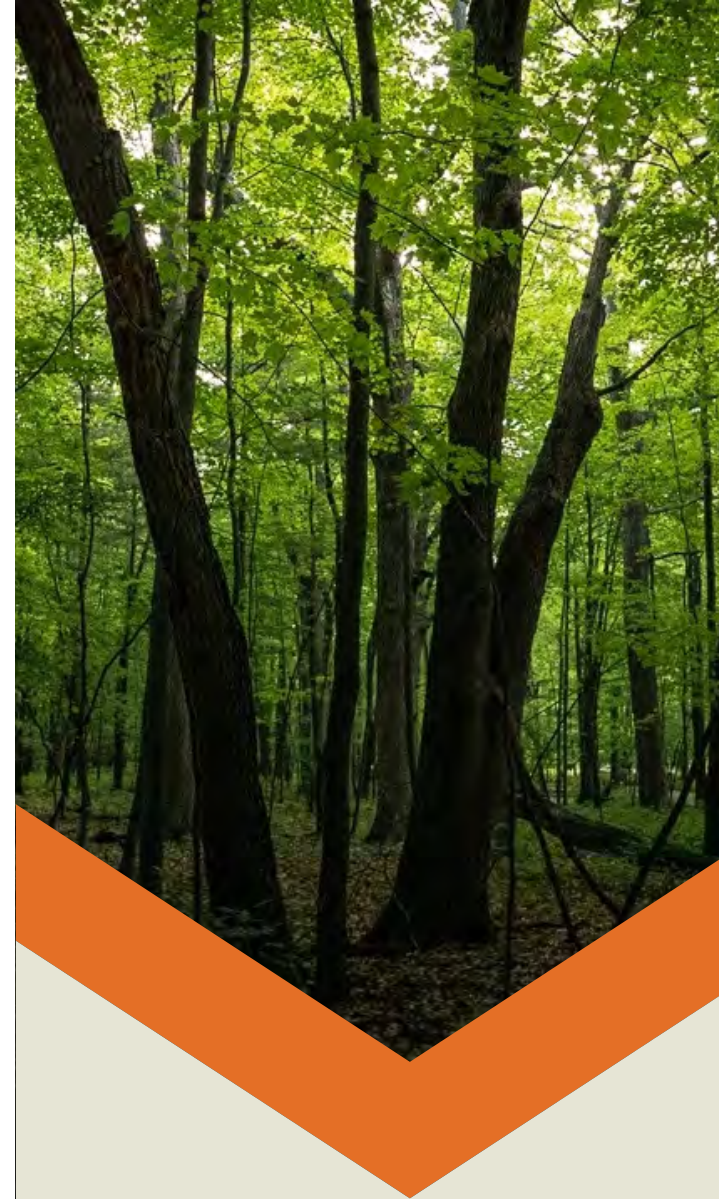
Your donation supports the work of the Saginaw Basin Land Conservancy and the landscapes that give us so much!



SBLC takes action at the intersection of people and nature, elevates landscapes for the benefit of all, and provides leadership in conservation.

Contact Us

706 S Euclid Ave
Bay City, MI 48706
saginawland.org
treedonation.org
(989) 891-9986



Taking Root

A TREE DONATION PROGRAM OF THE SAGINAW BASIN LAND CONSERVANCY

Taking Root donation package details

A tree is a beautiful, long-lasting way to honor someone's memory, give a gift to a special person, or congratulate someone on a job well done.

Caring Canopy Package

This \$500 package includes the purchase and installation of a potted or balled and burlapped tree at a location of your choosing from our list of pre-approved planting locations, a donor plaque and certificate, and a 1-year warranty. \$250 of your purchase can be a taxable donation.

Strong Roots Package

This \$300 package includes the purchase and installation of a bare root stock tree at an SBLC nature preserve, a certificate, GPS coordinates of where the tree is planted, and a 1-year warranty. \$250 of your purchase can be a taxable donation.

Program Guidelines

- Trees must be purchased through the SBLC and can be done so at any time throughout the year. Trees will only be planted in the spring and fall of each calendar year, based on local planting seasons.
- The purchaser of a tree will receive a certificate suitable for framing, including the honoree name, donor name, occasion, date, the location of the tree, tree species, and number of trees you have helped plant.
- The SBLC, City of Bay City, including the Parks Division, and Saginaw County Parks are not responsible for damage to the tree as a result of weather or vandalism.
- The SBLC does not guarantee the lifespan of a tree donation past the one-year warranty period.
- The SBLC will remove diseased and non-living trees at their discretion.
- Tree species will be selected by SBLC staff to best fit the location and to encourage a diverse and healthy tree canopy. Possible species are: White Pine, Red Maple, White Oak, Serviceberry

A full list of guidelines can be found online at treedonation.org



Place your tree donation
order directly through
our website at
treedonation.org
or mail in the enclosed
order form today!



Scan this QR code with your phone to be directed to the Taking Root website, where you can place a tree donation, and find out additional information.

Better Branches Regional Tree Initiative Flow Chart

Nighborhood Inventory & i-Tree

The Neighborhood Inventory and i-Tree canopy analysis will investigate all parcels in the target community, helping us determine planting and nursery locations.

Private land

Vacant land

Public land

Vacant
land tree
nursery

Tree
planting

Taking Root
Tree Donation
Program

